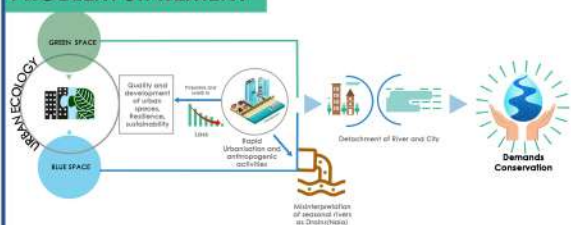


Sponsored Thesis Project Competition on "Re-imagining Urban Rivers"

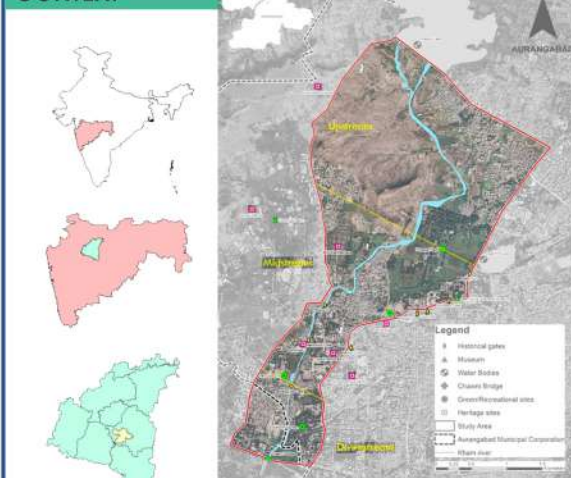
Planning Strategies for Riverfront development of Kham River in Aurangabad

Student Name: Abhishek Kailash Burkuley
Course Discipline: Master Of City Planning

PROBLEM STATEMENT



CONTEXT

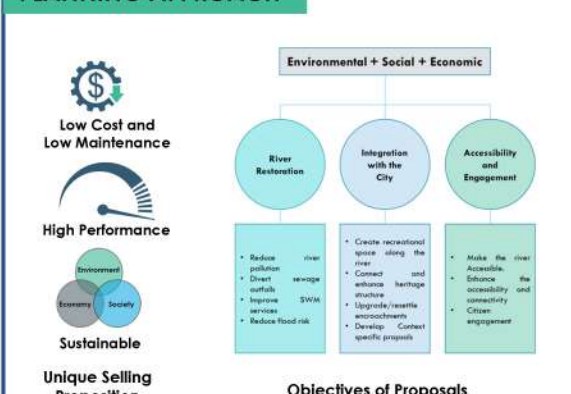


Features	Data/Information
Nature of the River	Seasonal
Origin of the River	Jahwada hills
Confluence Point	Godavari river (Nath sagar)
Rainfall	735.51 mm
Total Length of the River	60 Km
Source of Water	Rainfall, sewage inflow, fresh water springs
Length of The River considered under present study	7.73 Km
Depth	Shallow 1-3m
River Dimensions	Flood plain width - 80m River width - Non uniform (8-68m) Depending on the physical features, land use characteristics & functions and transport corridor
Basis of delineation of study area	Broadly divided into 3 zones - Upstream, midstream, and downstream

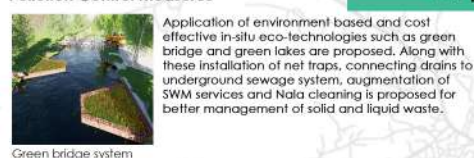
ISSUES



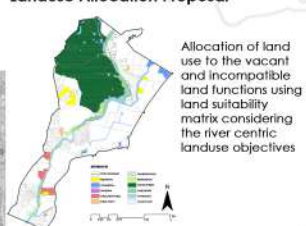
PLANNING APPROACH



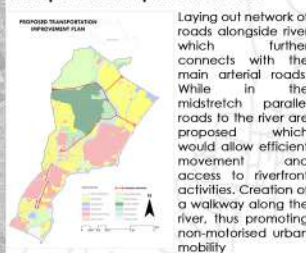
Pollution Control Measures



Landuse Allocation Proposal



Transportation Improvement Plan



Flood Control & Development Regulations

Channelization of the river to uniform mean width of 35m and 23m offset on either sides as floodplain area is demarcated.
Embankments, river deepening & widening and bunds etc.
Demarcation of Red and Blue and blue floodlines.
Plinth 450 above red line.



Overall Plan of Riverfront Interventions

Urban river spaces design possibilities in a systematic and transferable way are envisioned to provide opportunities for enhancement of river ecology, improve flood protection, and expand human amenities.

Proposals

- Recommendations for River Conservation
- Museumification of a identified stretch & linking it with heritage trail
- Structural upgradation of components
- Water management
- Regulation on withdrawal pattern
- Parallel tunneling for overpassing seasonal fluctuations

Tourism and Heritage Plan



A possible tourist circuit plan is proposed, that integrates existing sites of tourist importance with newly proposed riverfront sites. Various conservation measures such as structural restoration, illumination and fountains are proposed for heritage assets in the study area.

Biodiversity Park(300-ba)



Heritage Park



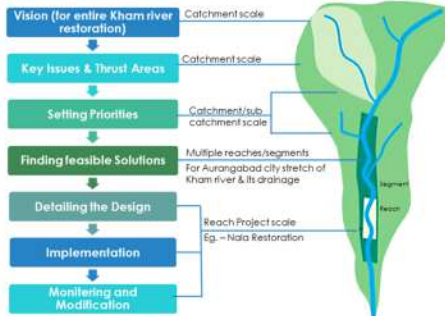
Recreational spaces

Development of Community parks, greenways, ecoparks

All Disability Park

To provide a dedicated facility for the specially abled with indoor and outdoor activities.

WHAT WE VALUE, WE USUALLY CARE FOR'



- Upstream Interventions**
 - Head watershed conservation works viz. green cover management, Site & Erosion Control, Water Harvesting Structures.
- Midstream Interventions**
 - Prevention and control pollution of Kham river, Nala and SWM management, Ecological Restoration, Green cover and Landscaping, Encroachment removal & Enhancement of recreational value.
- Downstream Interventions**
 - Depends on the result and efforts given at preceding stream restoration works